

**HELLO AND WELCOME TO OUR CHRISTMAS EDITION OF THE AHC NEWSLETTER.
HAS THIS YEAR OF THE EARTH RAT BROUGHT YOU NEW BEGINNINGS?**

THE EYES HAVE IN IT IN 08/09

Nothing ever really goes out of fashion does it? It's a cycle just like our lives. Mary Quant most likely introduced the first really matte lipstick and now her eye designs return.

LOOK ONE

Now, to get this very in look for summer we introduce two AHC's new products, LEURA and FIGTREE. First apply LEURA as a base with a small fluff brush. Then from the outer draw a series of dashes with AHC's BROWN eye pencil, then connect the dashes smoothing with your ring finger. Dip the AHC Concealer brush in water before applying FIGTREE as seen in the photograph to the [right/left] running the brush into the bottom lash line as well. Keep your eyebrow natural.



LOOK TWO

This eye is early sixties. Draw a firm line across the contour with your deluxe liner brush using none other than our blue from the MIDNIGHT cake eyeliner. Then draw another line from the outside corner of the eye joining the two lines at an angle. In between the lines, as you'll see from the eye pictured here on the left/right, you guessed it, BREEZE shimmer. Fill the middle from the lash line to the contour line with BREEZE using your small fluff brush. And again, keep your eyebrow natural.



LOOK THREE

Wings and things is not sixties it's more 2008 and it's a mixture of our new PERTH eye shadow and HAZE shimmer. LILLIPILLI as a base, keep the eyebrow natural and the black in MIDNIGHT cake eyeliner with the deluxe eye liner into the lashes. Once again, wet your concealer brush shaping the wings as in the eye pictured and work HAZE with a small fluff brush over the wings.



HOLIDAY CLOSING DATES

ALI HAMLTON COSMETICS

**WILL BE CLOSED
FROM**

**19th of December 2008
to the
12th of January 2009**



MARIAH CAREY

HOW TO COPY THE MAKEUP FROM A PHOTOGRAPH!

Sometimes, your clients bring in a photograph to explain the look they're after and would like to copy. First thing to do is to look into the photograph. Take note in particular of the eyes, which are so important, and the colour the makeup artist has used is probably the key to the makeup. As you're practicing the makeup, write everything down on a face chart so that you can adapt it to your clients.

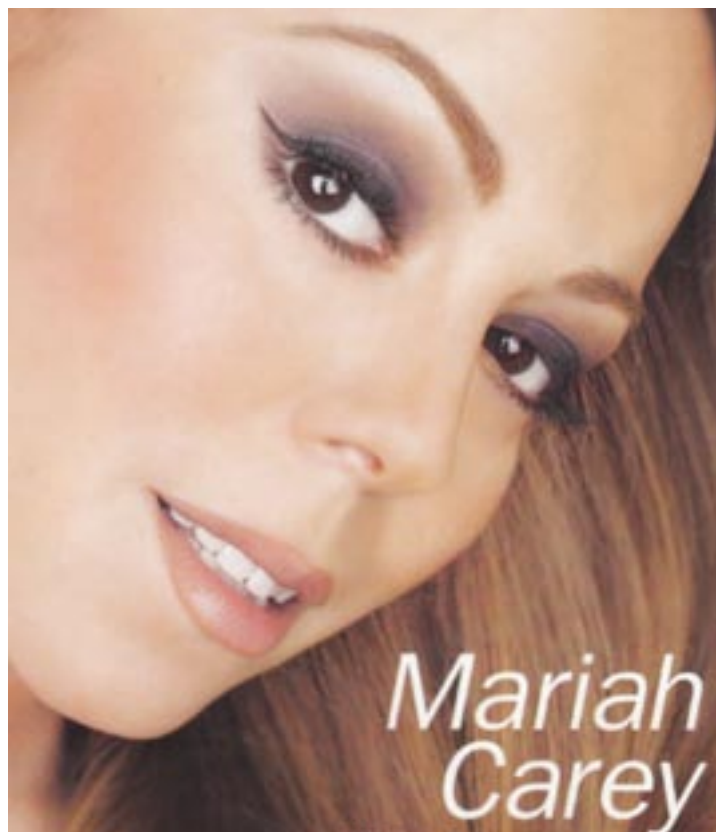
Use concealer light neutral on the inner eye to bring the eye forward. I'd apply the dual foundation in DARING with a moist sponge dusting BURDEKIN over the top with a mop brush.

Softly work the BRONZA over the cheekbone with a mop brush, then YASS into the eyebrow with your brow definer brush. You can catch Kylie doing eyebrows on You Tube at thatmakeup.com.

Blend ELIZA eye shadow using your large fluff brush from under the eyebrow through to the lash line. Pass any shadow left on the brush across the lower lashes and the top of the cheekbone. This will give more definition to the completed eye.

Using eyebrow definer brush, move TASSIE eye shadow into the lash and along the lid from the outer corner to the inner corner taking the brush backwards and forwards across the eye line blending over the eye lid. With what's left on the brush, work TASSIE into the lower lashes from the outer corner to the inner corner of the eye. Please note, from the photograph, the lightening of the inner rim & outer corner of the eye with white pencil. This extends the eye white.

With the deluxe liner brush, make a paste with the black cake eyeliner in MIDNIGHT. Taking the angle of the brush and the angle at the corner of the lower lid, lift the brush [at the same angle] out from the corner



of the eye to create the tick [note photograph]. Drag the brush from that point into the eye line and pull it through along the lash line to the inner corner. Repeat movement thickening the eye line across the lid.

Mix PARAP and YASS with large fluff brush. Blend into the contour with tiny circular movements. You can see ELIZA in the photograph under the brow. ELIZA will give a lift to the eye.

SHALE lip pencil onto lip line. Working the SHALE lip pencil into the corners of the mouth will give more shape to the lips. You can see how the makeup artist has lifted the lips slightly the bow enhancing her top lip.

Finally, MATILDA lipstick with a lip brush to fill in the lip adding DIAMOND lip gloss into the pout.

To all our valued Clients,

we appreciate your support during the past year and extend to you our best wishes for Christmas and 2009.

From
Ali and her Team



For further information call: 1800 040 204 • Visit: www.alihamylton.com.au or email: alihamylton@optusnet.com.au