

Ali Hamylton

PROFESSIONAL

NEWS

THE PERFECT MASCARA FOR THE PERFECT LASHES

It's always best to invest in a good quality mascara. I find that cheap mascaras dry out, clog & clump lashes when we want them to be long, thick & luxurious.

There's an easy way to tell which mascara is **right for you**. The bristles on the wand must be moist and there must be no globs of product on the brush as these make the lashes gluey and gummy.

Brush shape and size is a personal choice
- lengthy or short bristles,

whatever - don't let the wand put you off the mascara you know is right for you. Keep the wand you prefer and use it with the mascara you've chosen. And as a makeup artist, remember to use fresh disposable wands for each client.

Thick application: the first coat - place the wand at the root of the upper lash, wiggle it back and forth to deposit as much mascara as possible, pull the wand straight up to give weight then sweep through the lashes with a clean, dry spoolie brush or disposable wand. Re-apply & comb 3 or 4 more times to make the lashes really sleek. The lower lash is optional. I always take up that option.

For **curly lashes**, gently pinch at the lash root for a couple of seconds with little pulsing squeezes working up toward the tips of the lashes. Follow with 3 applications of mascara.

Colour is an option since we introduced **AHC bright blue**. I love black mascara though it can be too dramatic at times for some. That's why I introduced my new bright blue - the look is amazingly soft, the eyes sparkle.

Ali Hamylton



Ali's Hot Tip - to thicken your lashes, dust with a little **Tilba** eyeshadow before applying mascara. It's a great trick for those of us with fine lashes.

COME VISIT OUR WEBSITE

The Ali Hamylton team is proud to announce the launch of our fantastic new website.

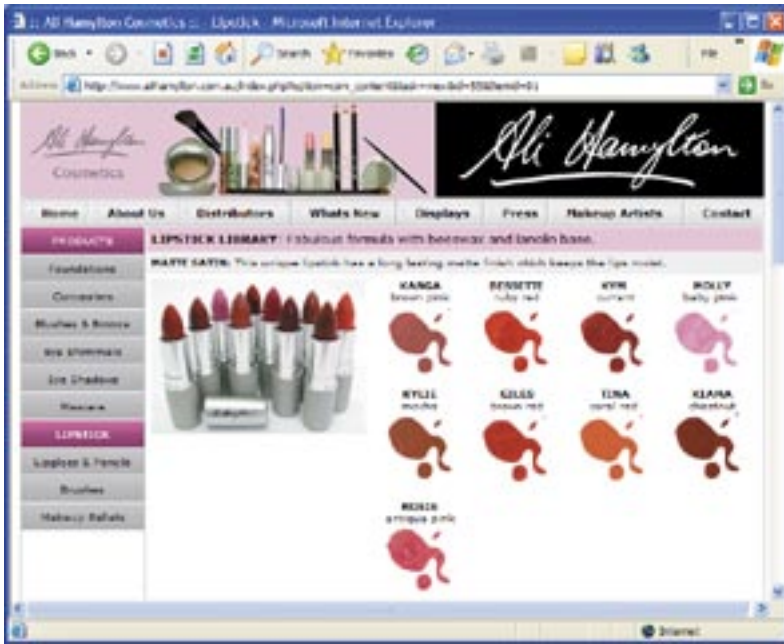
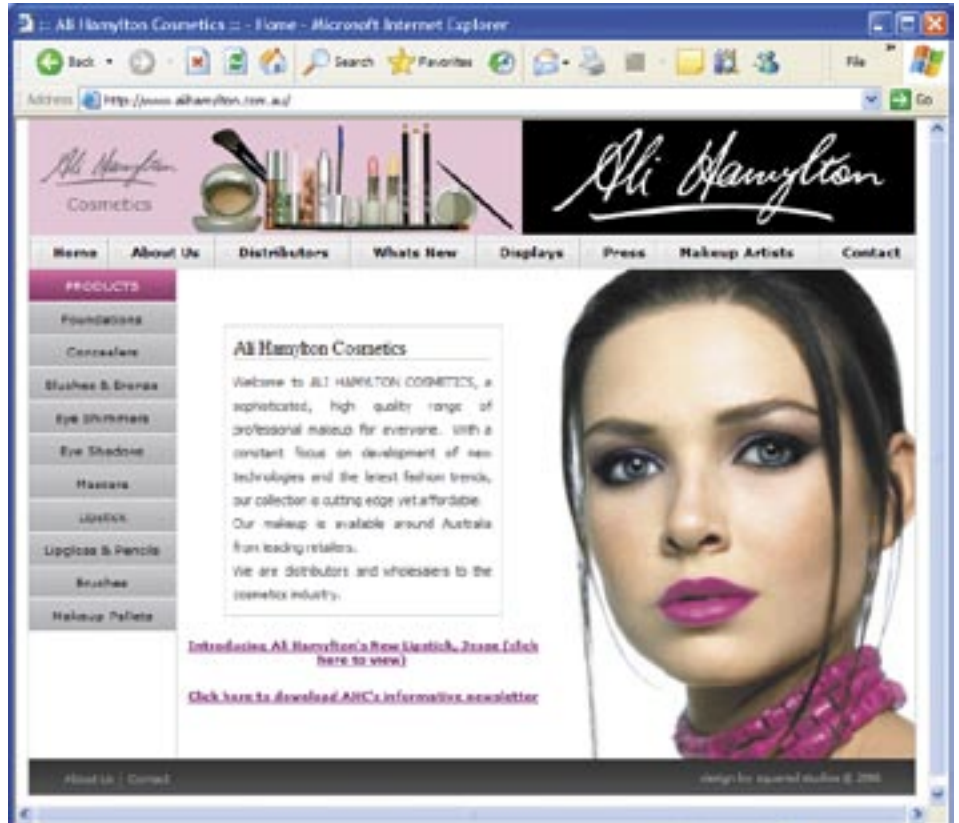
You'll find the complete Ali Hamylton range with colour swatches and descriptions in the 'Products' section – the menu list on the left side of the home page.

Click on 'Displays' for images of our eye-catching stands.

Under 'What's New', you can keep up-to-date with new products – this month it's the AHC new lipglosses 'Blossom' & 'Diamond' also the beautiful 'Jesse' lipstick.

You can download this newsletter directly from our home page to email to all your clients and friends, and there's lots more, so visit us today.

www.alihamylton.com.au



For further information call: 1800 040 204 • Visit: www.alihamylton.com.au or email: alihamylton@optusnet.com.au