

Ali Hamylton

NEWS

Edition 10 2008

**HELLO AND WELCOME TO THE YEAR OF THE EARTH RAT, A YEAR OF NEW BEGINNINGS.**

We have lots of news coming your way in '08. Firstly you'll notice that we've made some changes to the Ali Hamylton website, we've repackaged Simpson and scaled up our advertising.

**SHEBA AND SOPHIA - DISCOVER THE VERSATILITY OF AHC COSMETICS!**



**SHEBA**

Sheba has **Colo** dual foundation brushed lightly on her face, then the **Bonza Bronza** mopped all over the top except for her nose. **Colo** is the same colour as Sheba's skin, the bronza highlights and warms.

The new blusher, **Noosa**, softly over and under the cheekbones with Ali's **Mop brush**.

For the eyes, a fine line of the darker **Midnight** along the top lashes and tiny dots into the lower. As Sheba has such big, beautiful eyes, we have gently drawn a line of AHC **Black pencil** inside both lids.

Eyebrows are on the thick side for winter, so we didn't need to do anything with Sheba's.

**Venus** lipgloss finishes off this neutral and ultra soft look.

**SOPHIA**

For Sophia, we've used **Perisher Crème foundation** thinly applied with finger tips. Sophia is so pale, we've mixed **Eliza** with **Darling Dual foundation** and mop brushed over **Perisher** which gives her that beautiful glow.

A subtle swish of **Yass** through Sophia's eyebrows with the small AHC **Fluff brush** is followed by **Harmony/Otto eye crème** mix over her eyelid and blended carefully into and slightly above the contour.

With a **Definer brush**, **Tassie** eye shadow softly into the lashes to which we added tiny eye lashes and lots of **Black Mascara**.

A blend of **Otto & Melrose** cremes to the cheekbones and **Jazz** on the lips concludes Sophia's natural makeup.

## NEWLY REPACKAGED SIMPSON

AHC has repackaged the **SIMPSON** eyeshadow. The bronze half of **SIMPSON** has gone solo and there's been a slight colour change. Our information is that the colour for this winter is a warm honey pink not reddish, brown or too dark. You can now use **SIMPSON** as a bronzer, an eyeshadow, a highlighter and as a blush ... what a fabulous multi-faceted product!!!! Easily applied with a blusher brush, a mop, a large or small fluff.

You'll notice the new packaging too. When you purchase three **SIMPSON** eyeshadows with your first order, you will receive a **SIMPSON** refill free. **SIMPSON**, the colour of warm red gum honey.

Simpson on skin  
colour swatch



## VISIT US AT THE REVAMPED AHC WEBSITE

The revamped Ali Hamylton website features sensational new colour swatches on the Foundation, Bronzer, Blush and Eyeshadow pages with enhanced colour accuracy.

All your favourite pages are still there with a fresh new feel!



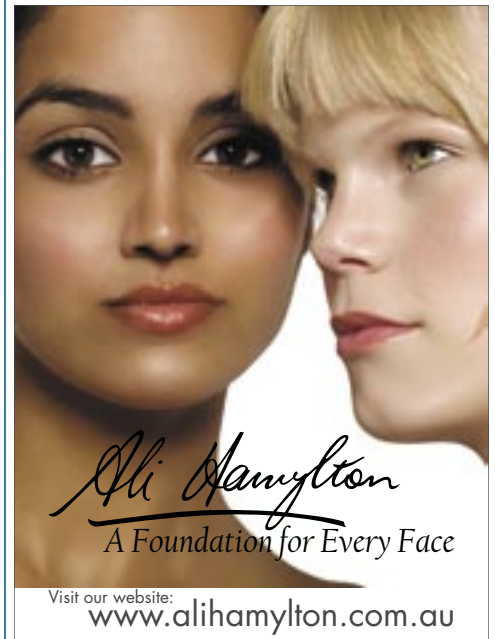
visit us at:

[www.alihamylton.com.au](http://www.alihamylton.com.au)

## ADVERTISING

Keep a look out for the beautiful full page advertisement below appearing in the March - April issue of **Professional Beauty**.

A full page AHC advertisement also appeared in the January 2008 issue of **New Woman**.



## For further information

We are pleased to be offering this service. Let us know what you would like to see in future issues by contacting Ali Hamylton Cosmetics at: [alihamylton@optusnet.com.au](mailto:alihamylton@optusnet.com.au)

For images of the featured products, contact Fiona Thompson at: [fiona\\_ahc@westnet.com.au](mailto:fiona_ahc@westnet.com.au)



**Freecall: 1800 040 204 • Visit: [www.alihamylton.com.au](http://www.alihamylton.com.au) or email: [alihamylton@optusnet.com.au](mailto:alihamylton@optusnet.com.au)**